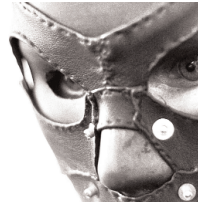


# sarah misselbrook



## Contact

Sarah Misselbrook  
81 Park Road  
Chandlers Ford  
Eastleigh  
Hants  
SO53 1GJ  
d.o.b. 05/10/77  
t. 023 8026 6946  
m. 07840 897402  
e. info@sarahmisselbrook.com  
w. www.sarahmisselbrook.com

## Education

Post Graduate Diploma in Fine Art	2007	Cyprus College of Art
PGCE (PCET)	2004	University of Southampton
A/S Psychology Grade A	2002	Itchen College
BA (Hons) Fine Art First Class Honours	2000	Nottingham Trent University
Nat. Dip. Foundation Studies Art & Design	1997	Portsmouth School of Art

## Training Courses

Emergency Aid in the Workplace	2006	St. John Ambulance, Bitterne, Southampton
CityBit web based learning resources	2004	Southampton City College
IT, Microsoft office, communication, teamwork, health and safety, record keeping and confidentiality	2003	Southampton City College
Course Representative Training Award	1999	Nottingham Trent University
Full and Clean Driving License	1998	

## Professional Experience

### Artist facilitator ArtVaults Season 4 2008

a space arts organisation

April 2008 - September 2008

- To chose two winning applications for the 'New Creators' project as part of selection day panel
- Project development activities including mentoring and practical sessions at school and college
- To oversee all installation of the works created for the New Creators project including technical assistance, health and safety procedures by given deadline
- To manage the budget for the New Creators for materials, equipment hire and installation costs, submitting expenditure record and invoice upon completion
- To assist with all marketing and publicity of the event, to attend press days and photo opportunities

### Creative account executive/Client representative

Grish Art

Graphic/Web Design Art Commissions and Photography

September 2000 - current

- To produce detailed project proposals, progress reports and evaluations
- To produce financial accounts including invoicing, sales, income and expenditure reports
- To complete administrative duties involved in business practice and development
- To develop networks/contacts for future client targets
- Project managing - initial quotes, arranging meetings and all typing requirements
- To liaise with funding bodies to produce work for exhibition, commission and on client request
- To organise events for learners and deliver lectures based on exhibitions

contd.

## Client Services Administrator

Professional Experience contd.

Idealogy Ltd

Marketing Consultancy

January 2006 - June 2006

- Client administration including liaising with appropriate external suppliers to complete design projects
- Liaising with design and production studios to update job status software application
- Data purchasing for global mail-outs
- Using FileMaker to enter purchase orders, expenditure invoices, job status to report to account executives
- Initial communication with client to receive project brief, formatting requirements to design studio

## Associate Lecturer

Art & Design Department

Southampton City College

Sept 2002 - August 2005

- Teach and assess on courses agreed with Art & Design Curriculum Team Leader
- To be personal 1:1 tutor to students as required
- To plan, prepare, assess and give feedback on work
- To prepare detailed lesson plans, evaluations and learner tracking evidence
- To maintain accurate records of progress towards targets and provide detailed written reports
- To continue professional development ensuring current knowledge of equality of opportunity, differentiation, health and safety and learning styles
- To develop and maintain effective industrial links
- To complete all administrative duties as required including organising team meetings, recording minutes and dissemination of relevant information to team

## Art Workshop Leader

Hexagon Centre

Dec 2001 - Feb 2002

- To provide sculptural, mould making and casting workshops for physically disabled clients and clients with learning disabilities
- To provide digital photography tuition for physically disabled clients and clients with learning disabilities
- To provide 1:1 and group mentoring for client creative projects

## Personal Tutor

'Home-School' Tutoring

July 2000 - Sept 2002

- To offer support to children and young adults with all subjects using artistic projects as learning aids
- Tutoring children and young adults with social and educational difficulties using physical mark making techniques and visual and spatial awareness projects in 2 and 3 dimensions

## Grants/Fellowships

Leonard Da Vinci Grant	2007	Grampus Heritage Fund
Grants for the Arts - Individual	2006	Arts Council England
Grants for the Arts - Individual	2004	Arts Council England
Grants for the Arts - Individual	2003	Arts Council England

## Selected Exhibitions [\*solo shows marked by asterisk]

2008		Read Me	Havant Arts Centre, Havant, UK
		How to tell yourself from a tv	En Plo Gallery, Pafos, Cyprus
2007	*	Unnatural Selection	Tc's Rock Bar, Pafos, Cyprus
		ela,ela [catalogue]	La Viande, Shoreditch, London, UK
		resurgence [catalogue]	Langstone Gate, Havant, UK
		ela,ela [catalogue]	Cyprus College Of Art, Pafos, Cyprus
		ela,ela [catalogue]	Idrima Panicos Mavrellis, Lemesos, Cyprus
2006		Christmas exhibition	Cyprus College of Art, Pafos, Cyprus
	*	1m2	Southampton City Art Gallery, Southampton, UK
	*	Affirmation	The Bargate Monument, Southampton, UK
2005	*	Sarah Misselbrook [catalogue]	Havant Arts Centre, Havant, UK
2004		End of Year Show	Michael Naimski Gallery, London, UK
		Human	a space, Southampton, UK
	*	Absolution	ArtVaults, Southampton, UK
		The Body	One Tree Gallery, Petersfield, UK
	*	Mind Consuming Body	a space, Southampton, UK
2003		Self Portrait	Southampton City Gallery, UK
	*	Sarah Misselbrook	Michael Naimski Gallery, London, UK
	*	Feast Your Eyes [catalogue]	Beatrice Royal Gallery, Eastleigh, UK

## Visiting Artist Lectures (guest lectures/workshops/critiques)

2008	Artist presentation, Cyprus College of Art, Pafos
2007	Artist presentation, Cyprus College of Art, Pafos
2006	An evening with the artist, Bargate Monument Gallery, Southampton
2005	Undergraduate Critiques, Southampton Solent University, Southampton
2005	Guest Lecture, Southampton Solent University, Southampton
2004	Artist Talk, a space gallery, Southampton
2003	Guest artist, Lee Peck Greenfield corporate event, Beatrice Royal Gallery, Eastleigh
2002/3	Transitional Classes, Barton Peveril College, Eastleigh
2002	Sculptural Workshops, Oakland's Community School
2002	Conceptual Self-portrait Drawing workshop, St Anne's School, Southampton
2001	Life Drawing workshops, St Anne's School & Sixth Form College, Southampton
2001	Arts Festival 3D Workshops, Sholing School, Southampton

## Commissions

2007	Sculptural wedding bouquet, private commission, Southampton
2005	Steel figurative archway, Fruit Bar, Dolphin Hotel, Southampton
2004	Figurative bed head rest, Dolphin Hotel, Southampton
2002	Figurative relief mural, Oaklands Community School, Southampton
2001	Tiled wall mounted sculpture, Sholing School, Southampton

## Artist in Residence

2003	3 day residency creating artwork for 1 month installation, Southampton Saab, Southampton
2002	4 day residency with out of school learning group, Oaklands Community School, Southampton
2001	3 day casting workshops Year 9-11, Sholing School, Southampton

## Professional Service

2005-6	Creative practice representative, Board Member, Millais Gallery, Southampton
--------	--

## Technical Abilities

My practice is multi-disciplined and crosses the boundaries between 2 dimensional, 3 dimensional, curating, installation and photography. Technical abilities within the realisation of my own work as well as experience in teaching these skills to others include:

- Sculptural modelling, carving, casting, and construction techniques
  - wire armature construction
  - mig welding/soldering
  - hot wire carving, vacuum forming
  - stretcher and frame construction, band/chop saw, belt sanding
  - hand modelling in wax/papier-mâché/clay
  - relief carving wood/plaster
  - sand/alginat/mod-roc casting.
  - latex/resin and fibreglass/silicone/plaster mould-making
  - curating and installing of 2d/3d/sound/video installation artworks
- Drawing, painting and mark-making
  - observational drawing from still life/life model/environment
  - wet and dry techniques on paper/canvas/alternative materials
  - golden section rule of proportion/composition
- Photography and computer based techniques
  - studio/environmental digital/black and white photography
  - photographic manipulation
  - pc/apple/mac platforms
  - html/css
  - mac operating/graphic design

## Exhibitions Curated (\* curated independently)

2008		How to tell yourself from a tv	En Plo Gallery, Pafos, Cyprus
2007	*	Unnatural Selection	Tc's Rock Bar, Pafos, Cyprus
2005	*	Sarah Misselbrook (catalogue)	Havant Arts Centre, Havant, UK
2003	*	Feast Your Eyes (catalogue)	Beatrice Royal Gallery, Eastleigh, UK

## Collections

Oversized • private collection UK 1999  
Tart • private collection Australia 2003  
Going That Same Way • private collection UK 2004  
You, Me, Her • private collection UK 2007  
Ruining • private collection Cyprus 2007  
Devouring • private collection Cyprus 2007  
Improving • private collection Cyprus 2007  
Denial • private collection Cyprus 2007  
Refusal • private collection Cyprus 2007  
Dismissal • private collection Cyprus 2007  
Every time I look in the mirror • private collection Cyprus 2007  
This is what I see • private collection Cyprus 2007  
Every time II • private collection Cyprus 2007  
Beware of her appetite I • private collection Cyprus 2007  
When will it change? • private collection Cyprus 2008  
Penetrable • private collection Cyprus 2008  
Approachable • private collection Cyprus 2008  
Desirable • private collection Cyprus 2008  
Trouble with this is - triptych • private collection Cyprus 2008

## Bibliography (reviews/articles/interviews)

Nema McMorran, "Sarah Misselbrook Unnatural Selection," *Arteri*, Issue 5, February 2008  
Culture Editor, How to tell yourself from a TV Television Interview, Omega Channel, Pafos, Cyprus, February 1, 2008  
Culture Editor, Unnatural Selection TV Television Interview, Omega Channel, Kato Pafos, Cyprus, October 8, 2007  
Kate Thompson, "Affirmation of a genuine talent," *The Daily Echo* Tuesday, July 4, 2006  
David Newble, "All for art at Bargate," *The Daily Echo* Saturday, May 27, 2006  
Richard Cartridge, Affirmation Radio Interview, BBC Radio Solent, BBC Radio Solent, Southampton, May 28, 2006  
David Newble, "Bargate has a brush with art," *The Daily Echo* Thursday, May 25, 2006  
David Newble, "The Bargate becomes an art centre," *The Daily Echo* Thursday, April 27, 2006  
Arts Journalist, Affirmation Radio Interview, BBC Radio Solent, Southampton, March 15, 2006  
Ali Kefford, "a space for modern art," *Hampshire Society* magazine September, 2004  
The Arts Editor, "Chance to meet artists at vaults," *The Daily Echo* Saturday, September 11, 2004  
The Arts Editor, "Art Review," *Pout* magazine August, 2004  
Jess Husband, "Local artists celebrate going underground in the city," *The Daily Echo* Saturday, August 7, 2004  
Chris Coneybeer, ArtVaults Television Interview, BBC South, Castle Vault, Southampton, July 20, 2004  
The Arts Editor, "Female artists' work on display," *Petersfield Post*, Wednesday, March 17, 2004  
The Arts Editor, "Artist ready to give talk on her inspiration," *The Daily Echo* Tuesday, January 27, 2004  
The Arts Editor, "Exhibition: Mind Consuming Body/And Light Escapes," *The Daily Echo* Friday, January 16, 2004  
Andrew White, "Art and soul on show," *The Daily Echo* Thursday, January 15, 2004  
Katherine Cleave, "Chocol-art & Film Classics: it's still life," *Eden* November, 2003  
Geoffrey Williams, "Sarah Misselbrook: An Artist with Ambition," *Hampshire the county* magazine September, 2003  
Duncan Eaton, "Don't let the Feast become a Famine," *The Daily Echo* Saturday, August 2, 2003  
The Editor, "Sarah Misselbrook," *And Magazine* July, 2003  
The Editor, "Art for business' sake," *The Daily Echo* Tuesday, June 3, 2003  
The Editor, "Art Gallery gets down to business," *The Daily Echo* Monday, May 26, 2003  
The Editor, "We were plastered!," *The Daily Echo* Saturday, October 26, 2002  
Kate Thompson, "Suffering for her art," *The Daily Echo* weekend magazine Saturday, August, 2002

## References

Ms. A Lydiat  
Undergraduate Tutor  
School of Art and Design  
Nottingham Trent University  
Bonington Building  
Dryden Street  
Nottingham  
NG1 4BU  
United Kingdom  
+44 (0)115 848 8436  
ntsad@ntu.ac.uk

Miss W. Holt  
Teacher of Art & Design  
St. Anne's School & Sixth Form  
College  
Rockstone Place  
Southampton  
SO15 2WZ  
United Kingdom  
+44 (0)23 8032 8200  
info@st-Anne's.southampton.sch.uk

Caroline Hamm  
HR Administrator  
Southampton City College  
St Mary Street  
Southampton  
SO14 1AR  
United Kingdom  
+44 (0)23 8057 7400  
caroline.c-b-c@southampton-city.ac.uk